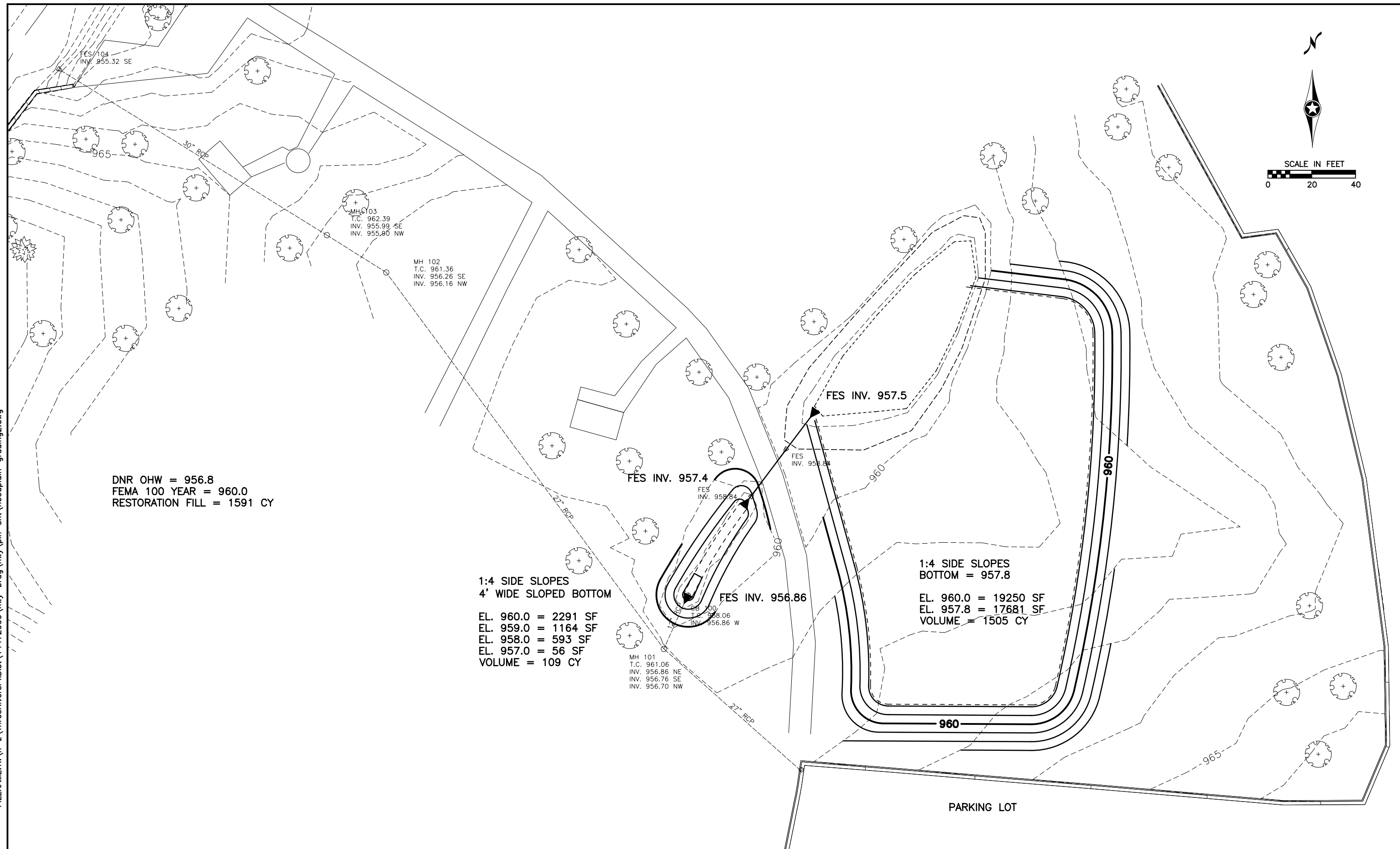


DATE: 7/1/2010 TIME: 5:09:42 PM
 FILENAME: K:\n-z\ThreeRiversPKDist\14472000\hwy-brdg\hwy\pin-sht\ floodplain-grading2.dwg



SCALE IN FEET
 0 20 40



DNR OHW = 956.8
 FEMA 100 YEAR = 960.0
 RESTORATION FILL = 1591 CY

1:4 SIDE SLOPES
 4' WIDE SLOPED BOTTOM
 EL. 960.0 = 2291 SF
 EL. 959.0 = 1164 SF
 EL. 958.0 = 593 SF
 EL. 957.0 = 56 SF
 VOLUME = 109 CY

1:4 SIDE SLOPES
 BOTTOM = 957.8
 EL. 960.0 = 19250 SF
 EL. 957.8 = 17681 SF
 VOLUME = 1505 CY

NO.	DATE	BY	DESCRIPTION OF REVISIONS

3602 Atwood Ave, Suite 1
 Madison, WI 53714
 608.441.0342
 www.interfluve.com

TKDA
 ENGINEERING • ARCHITECTURE • PLANNING

Three Rivers
 PARK DISTRICT

PRELIMINARY
 FLOODPLAIN GRADING PLAN

BAKER PARK
 BEACH WALL REHABILITATION
 Drawing No.