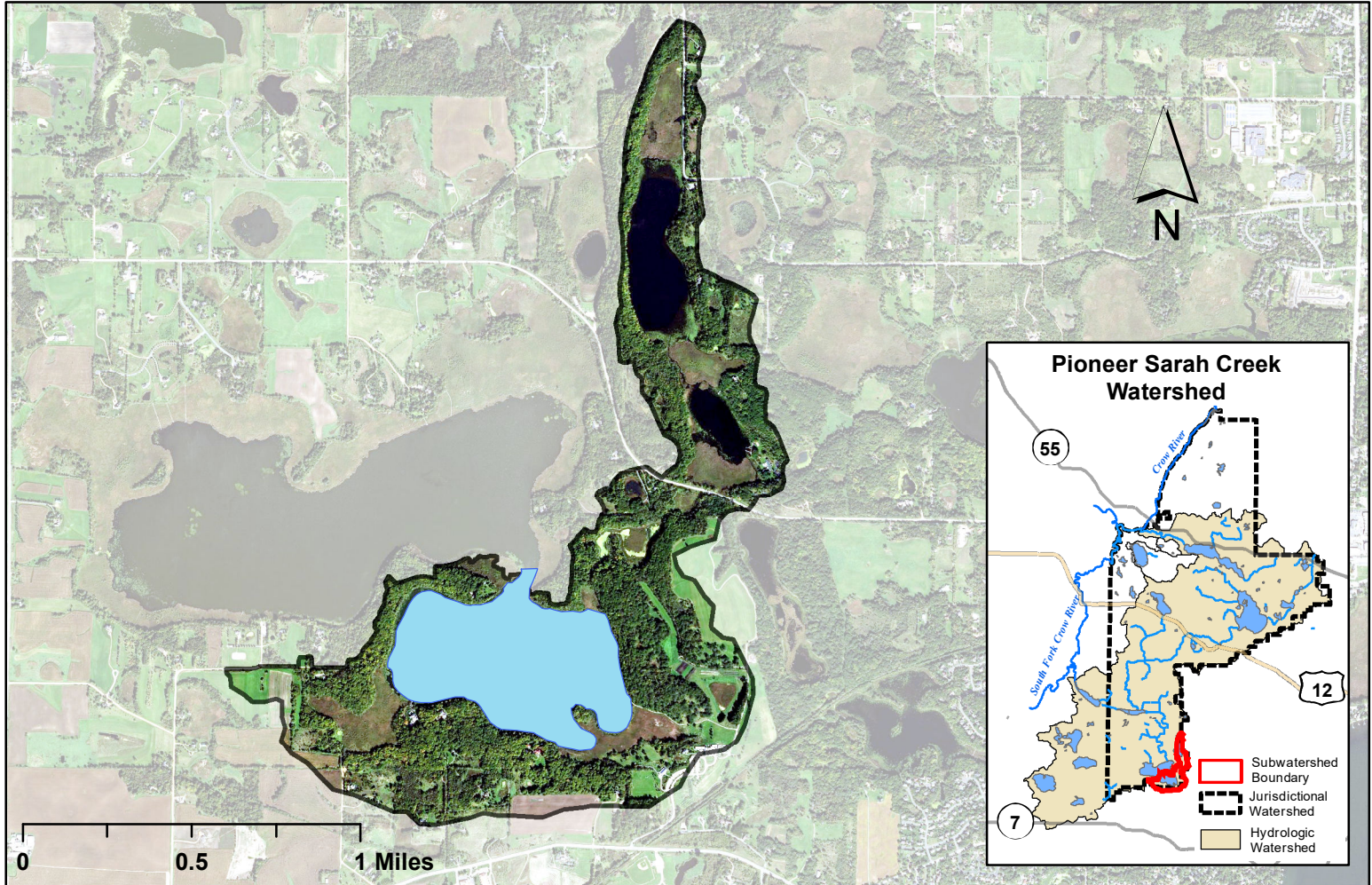
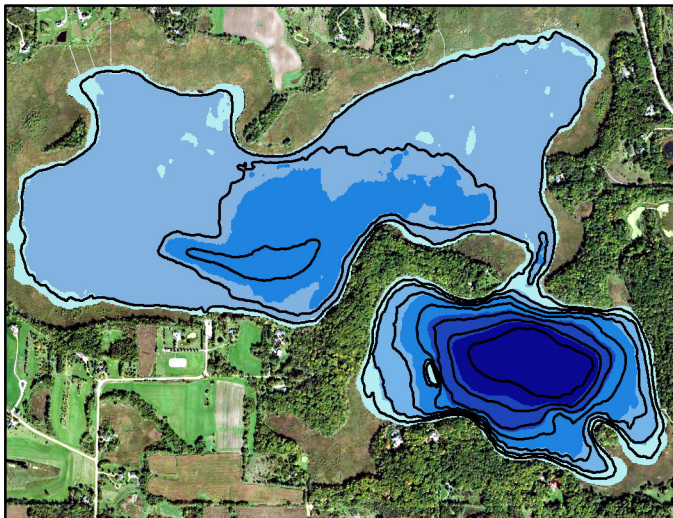


Whaletail South Watershed Map

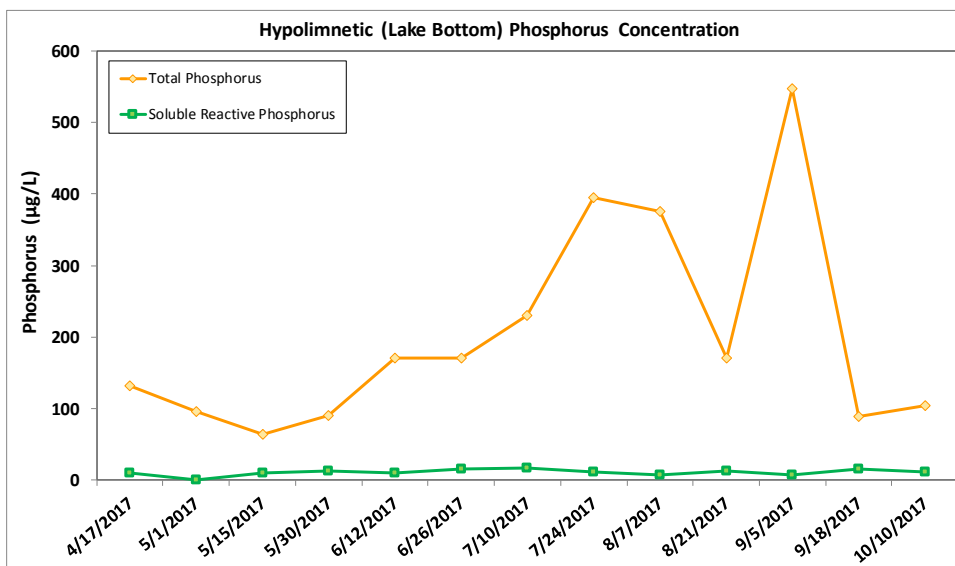
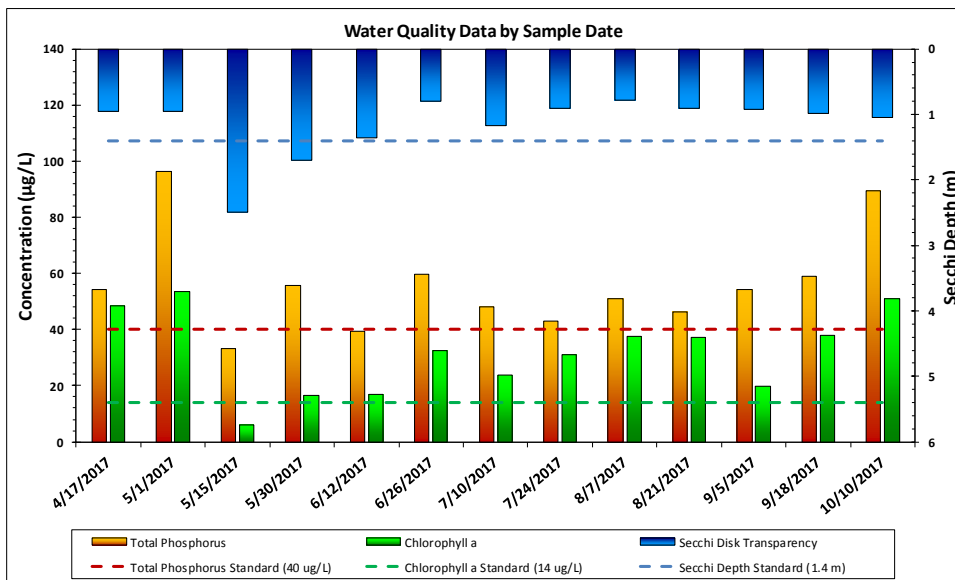
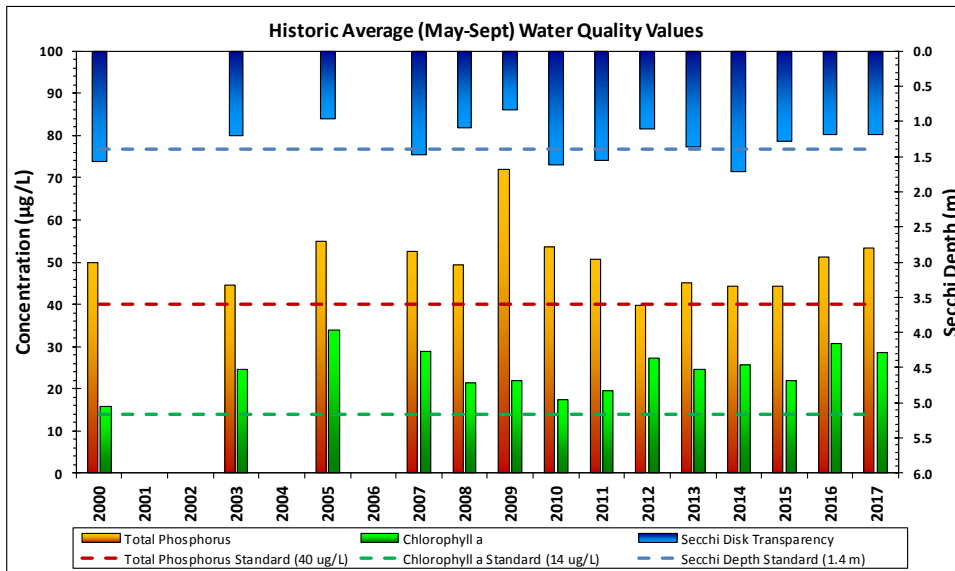


Whaletail South Bathymetry



Lake and Watershed Characteristics

DNR #	27018402
Watershed Area	661 Acres
Lake Area	156 Acres
Percent Littoral Area	66%
Average Depth	12.1 ft.
Maximum Depth	23.3 ft.
Watershed Area:Lake Area	4.2:1
Impairment Classification	Proposed 2016
Classification	Provisional Deep Lake



Whaletail South Water Quality Report Card				
Year	TP	Chl-a	Secchi	Avg Grade
2000	C	B	C	C+
2001	C	B	C	C+
2002	C	B	C	C+
2003	C	C	C	C
2004	C	C	C	C
2005	C	C	D	C-
2006	C	C	D	C-
2007	C	C	C	C
2008	C	C	D	C-
2009	D	C	D	D+
2010	C	B	C	C+
2011	C	B	C	C+
2012	C	C	D	C-
2013	C	C	C	C
2014	C	C	C	C
2015	C	C	C	C
2016	C	C	D	C-
2017	C	C	D	C-
MPCA Standard	C	B	C	C+

Met Council Grading System for Lake Water Quality