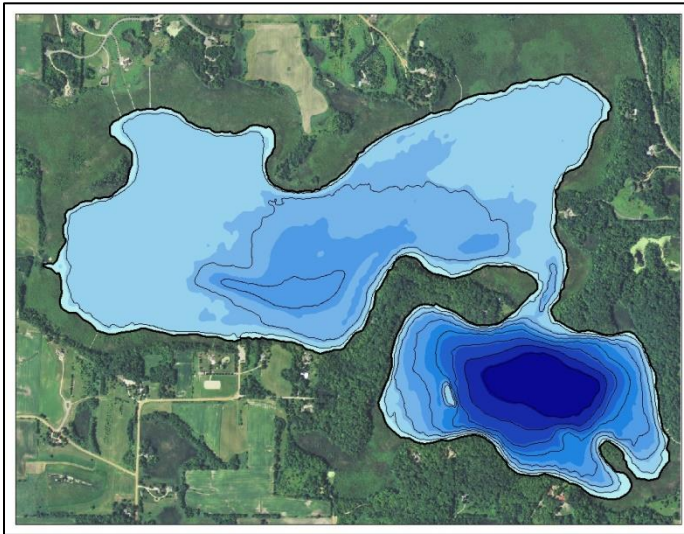
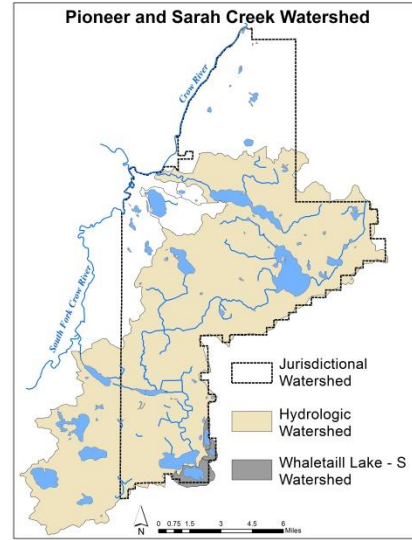
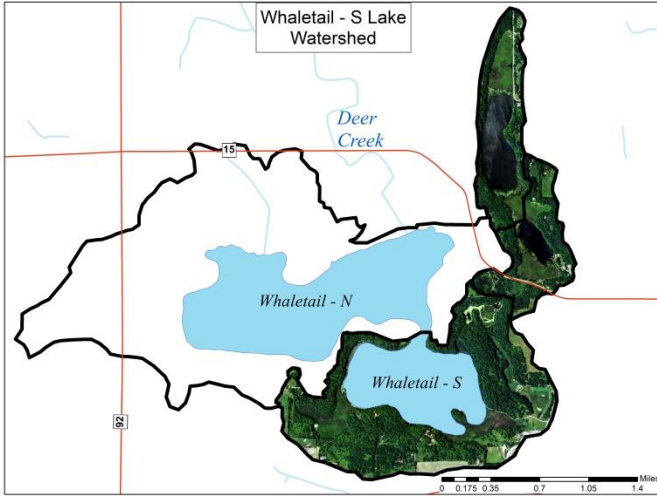
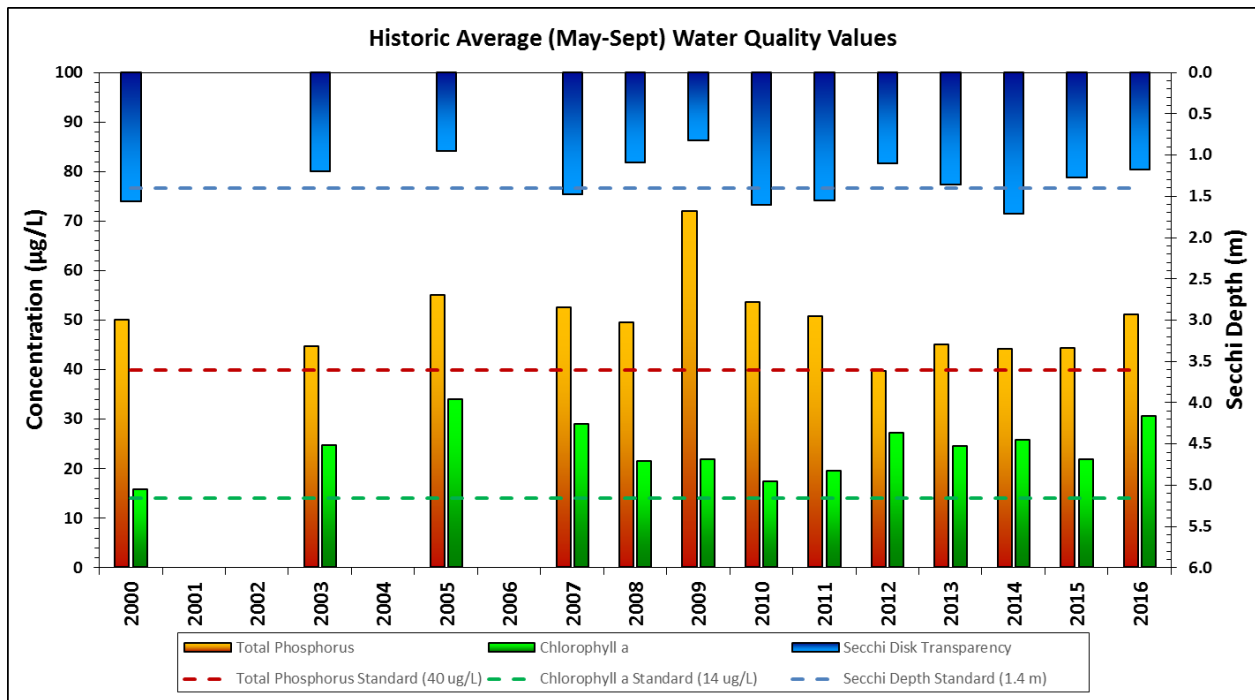


# Whaletail South



Lake and Watershed Characteristics	
DNR #	27018402
Watershed Area	661 Acres
Lake Area	156.1 Acres
% Littoral Area	66%
Average Depth	12.1 ft
Maximum Depth	23.3 ft
Watershed/Lake Area Ratio	4.2 to 1
Impairment	Proposed Listing 2016
Classification	Provisional Deep Lake



Whaletail South Water Quality Report Card				
Year	TP	Chl-a	Secchi	Avg Grade
2000	C	B	C	C+
2001				
2002				
2003	C	C	C	C
2004				
2005	C	C	D	C-
2006				
2007	C	C	C	C
2008	C	C	D	C-
2009	D	C	D	D+
2010	C	B	C	C+
2011	C	B	C	C+
2012	C	C	D	C-
2013	C	C	C	C
2014	C	C	C	C
2015	C	C	C	C
2016	C	C	D	C-
<b>MPCA Standard</b>	C	B	C	C+

Metropolitan Council Grading System (Osgood 1989)

